



Charles & Ray Eames: Eames House and Studio

Case Study Houses

'The Case Study Houses of Los Angeles'
by Elizabeth A.T. Smith
'Eames House and Studio' by Eames Demetrios

Charles & Ray Eames
Pierre Koenig
Edward A. Killingsworth
Craig Ellwood



MLTW: Sea Ranch Condominium

Charles Moore in Berkeley

'Moore and MLTW Architecture, Born in Berkeley'
by Hiroshi Misawa
'Dialogue with Charles Moore—On Sea Ranch'

MLTW/
Charles Moore
Donlyn Lyndon
William Turnbull, Jr.
Richard R. Whitaker, Jr.

LA School

'LA School' by Yoshio Futagawa

Ray Kappe
John Lautner
Frank O. Gehry
Edward R. Niles

Morphosis
Eric Owen Moss
Franklin D. Israel



Frank O. Gehry: Gehry Residence

New York Five

'New York Five' by Yoshio Futagawa

Richard Meier
Charles Gwathmey
Michael Graves
Peter Eisenman
John Hejduk



Richard Meier: Douglas House



Tod Williams Billie Tsien: Rifkind Residence

East Coast

Robert Stern
Scogin Elam & Bray
Tod Williams Billie Tsien
Steven Holl



Will Bruder: Feigin Residence

Desert Houses

Bart Prince
Antoine Predock
Will Bruder
Rick Joy

Italy

'Post WW II Italian Residential Architecture and Interior/Furniture Design' by Marco Palmieri

Carlo Scarpa
Tobia Scarpa
Angelo Mangiarotti
Vico Magistretti
G. Ponti + N. Vigo

Carlo Moretti
Luigi Moretti
Piero Sartogo
Vittoriano Viganò
Ettore Sottsass



Tobia Scarpa: Scarpa House

Northern Europe

'Houses in Scandinavia, History and Analysis' by Christoph Affentranger

Alvar Aalto
Ralph Erskine
Jørn Utzon
Sverre Fehn



Sverre Fehn: Studio Holme



Rem Koolhaas/OMA: Maison à Bordeaux

European Contemporaries

Richard & Su Rogers
Rem Koolhaas/OMA
Mario Botta
Klaus Kada
Volker Giencke
Georg Driendl
T. Sunyer/J. Badia
Álvaro Siza



Oscar Niemeyer: Niemeyer House

Latin America in the 1960s

'Latin American Architects Encountered in the 1960s' by Makoto Suzuki

Oscar Niemeyer
Lina Bo Bardi
Paulo A. Mendes da Rocha
Joaquim Guedes
Luis Barragán
Ricardo Legorreta

Latin America Today

'Six Points about the Contemporary Latin American Houses' by Gabriel Kogan

Alberto Kalach
Enrique Norton/Ten Arquitectos
Marcio Kogan
Angelo Bucci
Mathias Klotz
Felipe Assadi
Smiljan Radic



Mathias Klotz: Viejo House

Australia

'Aussie Houses' by Yoshio Futagawa

Glenn Murcutt
Peter Stutchbury
Sean Godsell



Glenn Murcutt: House in Southern Highlands

Peter Stutchbury + Shane Blue: Harbour House

Newcastle, New South Wales, Australia, 2002

It has long been the ambition of these architects to design for this magnificent north facing harbour side dress circle location.

The site, just below ridgeline has prospect over the mighty Hunter River. Orientated due north this site needs to be managed for the extremes of the sun and light such a clear-skied outlook requires a softening of climatic conditions. The eventual concept was to see the solution as an armchair that might be placed strategically under the protective branches of a tree, sometimes in the depth of shade, the dappled light of broken shade or the edge where a blast of sun benefits winter chills.

A large simple cut into the land provides a platform that has a distinct front and back. The platform is protected by the downward sweep of a sculptural canopy, designed to soften light reflection into the rooms below and beyond.

The composition of this building does not guide the resident toward the traditions of residential lifestyle—there are few definitives but instead a series of variations that remove the constancy of experiencing a building replacing that event with an edge of living experience where night and day are recognised only by the changing level of light and noise, and hospitality moves equally through the building in the form of entertainment.

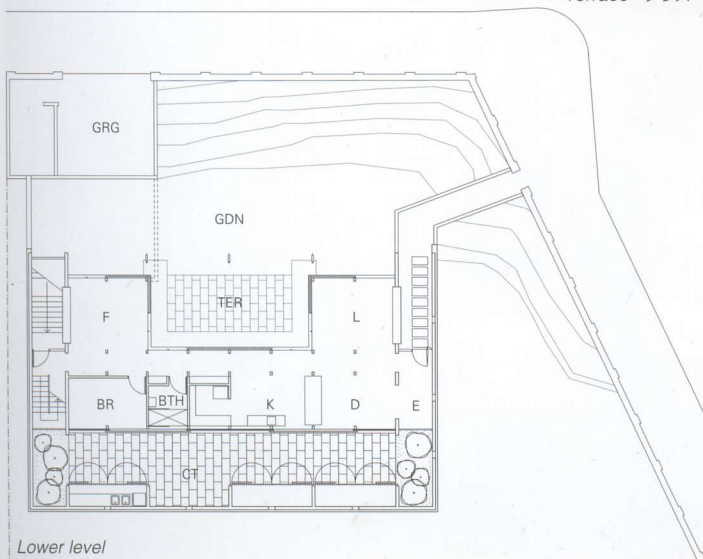
The fact that humans adapt eas-



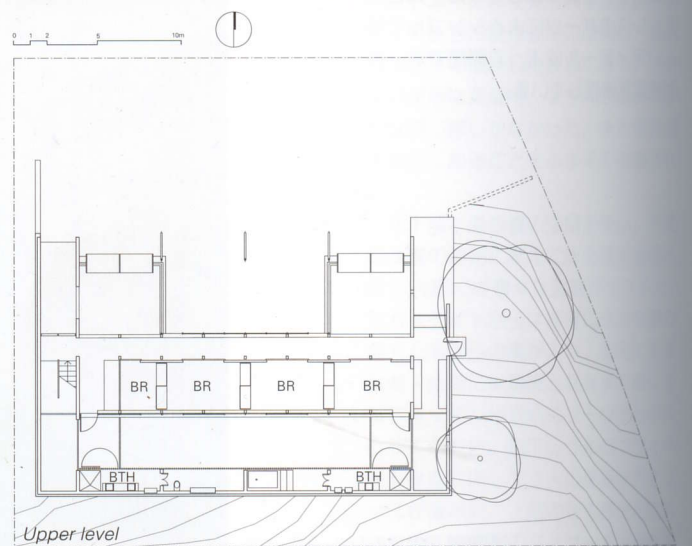
View from northeast: garden 北東より見る：庭



Terrace テラス



Lower level



Upper level