

exterior view from beachside



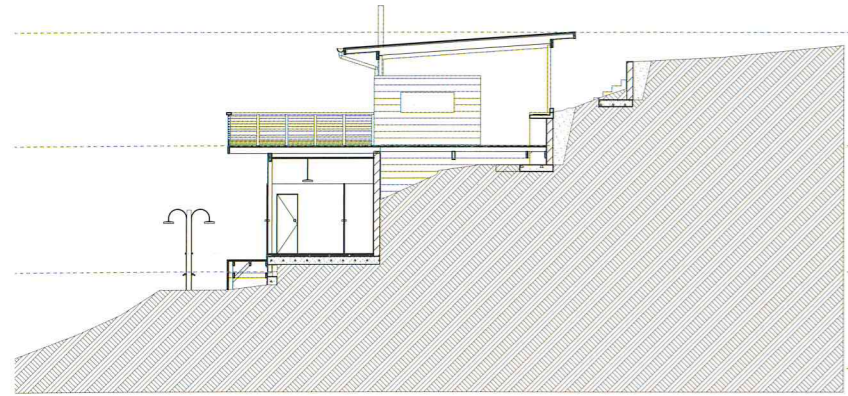
# NSW North Coast House

New South Wales, Australia

**Architect:** Bourne Blue Architecture  
**Engineer:** Izaat  
**Completion year:** 2011  
**Materials:** fibre cement, wood, glass panels

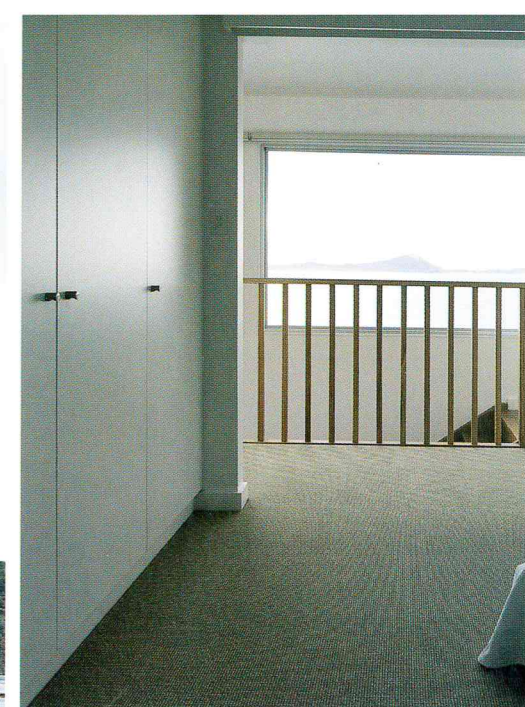
This exciting modern residence is located next to Diamond Beach on the mid north coast of New South Wales. On a flat site with modest views over wetlands, the house itself, rather than a stunning view, became the project's central feature – and how well this striking house deserves that prominence. A beautiful central court is warmly embraced by four unique components, each of

which has an individual roofed deck, housing hammock inviting relaxation, a dining space or the entry. Simple ing screens close off the decks at the edge of the bu ing, providing security and welcome protection against harsh sunlight and strong winds. This dazzling dwellin would surely be an idyllic place in which to live.

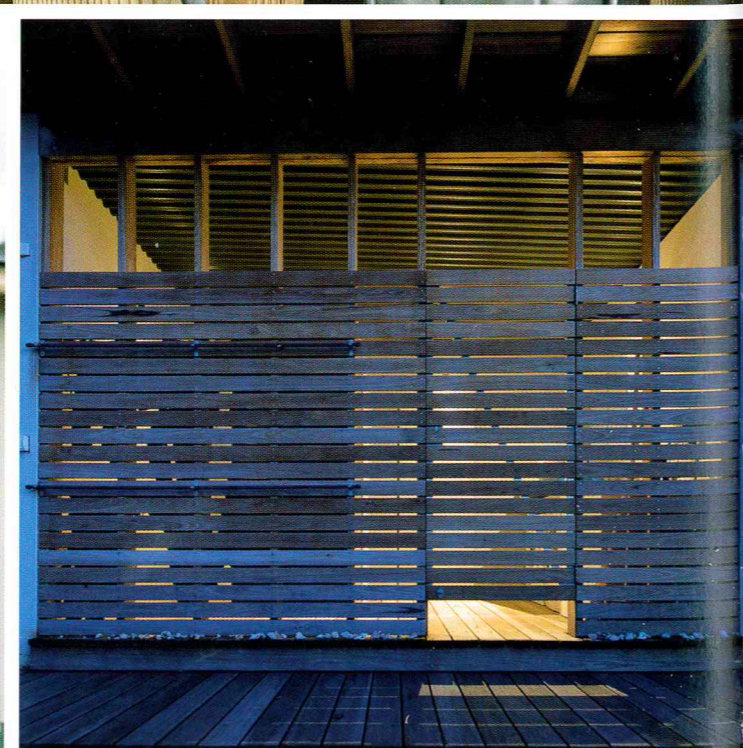


from above to below: section, living room opens up to cantilevered terrace





from above to below: bedroom, bathroom, floor plans



from above to below from left to right: interior side view

