

Gerroa House

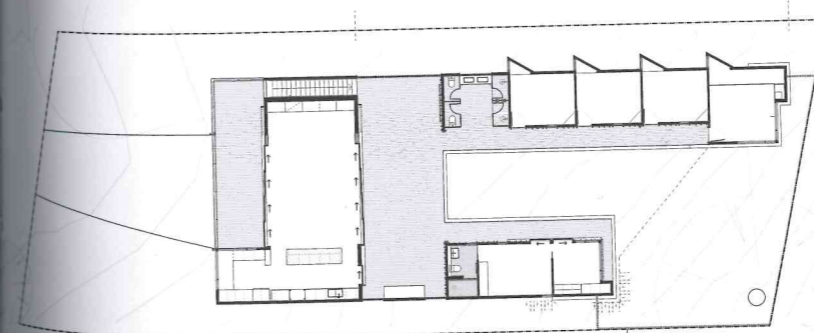
*New South Wales, Australia
Bourne Blue Architecture*

Located in the popular holiday destination of Gerroa, the client wished to have a simple holiday house that took best advantage of the site and its extensive views down to the beach. The house needed to accommodate extended family groups, but also act as a simple weekender for a couple.

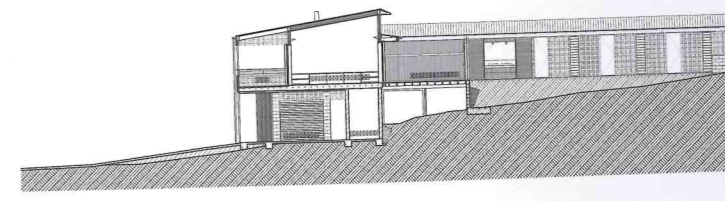
An easy transition from the beach to the house was required and surfaces needed to be hardy so that durability is not a concern. Winter storms on the south coast are ferocious and this site is quite exposed to the south, so the house (and its inhabitants) had to be able to cope with these conditions.

The built form is articulated into three simple elements, under a continuous roof, that wrap around a central external space, creating a sheltered spot away from the blustery winds. The materials were chosen especially for the seaside location, and are economical and corrosion-resistant. The house has a sustainable design, with correctly oriented thermal mass, heavy insulation, rainwater collection for reuse, and sustainable timber use.

From the street, Gerroa House resembles a typical beach house in this area, if updated to contemporary modern standards, with timber cladding and a hardy landscaped garden. But once inside, the best views are from the edge of the house, from the kitchen, and living room.



Ground-floor plan



Section



