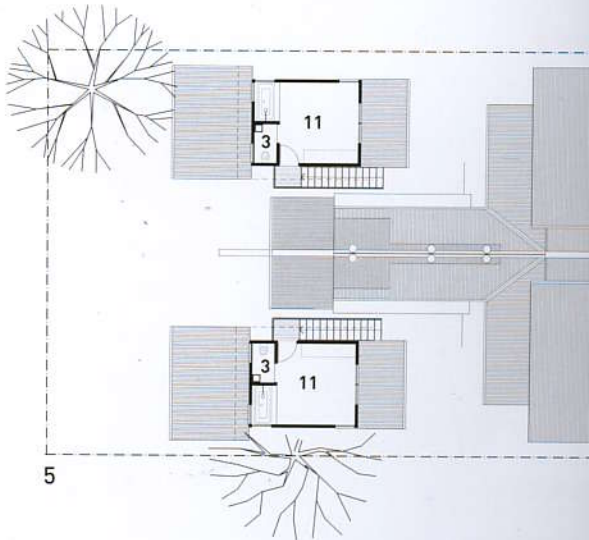


3

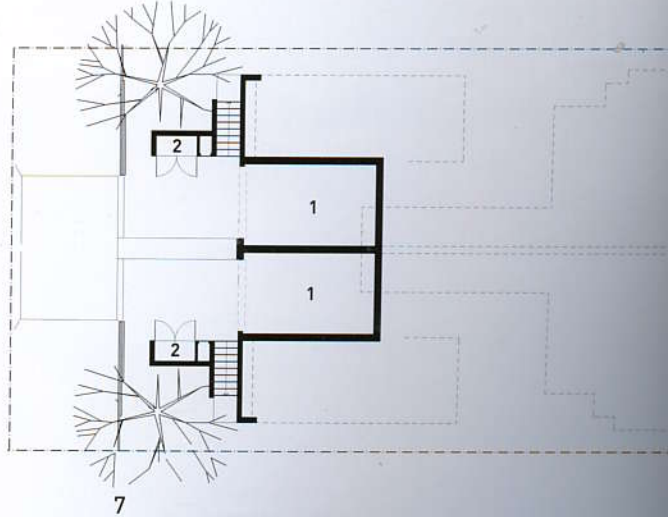
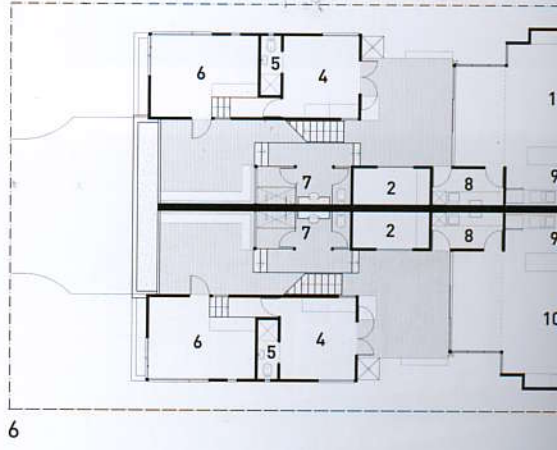


4

Conceived as exquisite pavilions on the top of a sand dune, these two houses at the south end of **Boomerang beach** on the New South Wales north coast offer some unique accommodation. • The various spaces of the houses are separated by decks and outdoor space, allowing vegetation to come between the buildings, blurring inside and outside. The pavilions are highly crafted timber boxes, providing a tactile and human scale. The proportions of the spaces alter depending on use: a soaring ceiling for the living spaces, a low curving plywood ceiling to provide intimacy for the dining space. A partially dynamic bunkroom provides delight for children of all ages. • There are several ways to bathe here: fully outdoor on turning from the beach, a bath partially outdoors with privacy, or an open bath in the 'turret' bedroom. There are several ways to live here, too: on top of the dune, with built-in seats and screens, or sheltered from the elements with the living room closed up, or in the protected court, away from the breezes. The climate dictates how the various spaces are used. • The brief was to design two compact houses, side-by-side. The clients are two couples, who intended to use one of the homes as an investment (holiday rental) property and the other for their own use. The other priority was that each of the dwellings be designed to thoughtfully accommodate two families. The two homes have a mirrored layout. A central spine connecting the two dwellings contains utility spaces such as bathrooms, wardrobe rooms and kitchens. Each dwelling has a two-storey structure at the rear of the site containing bedrooms and a separate turret bedroom overlooking the beach.



- 1 Cars
- 2 Storage
- 3 Bathroom
- 4 Bedroom 1
- 5 Ensuite
- 6 Bunkroom
- 7 Outdoor bathroom
- 8 Laundry
- 9 Kitchen
- 10 Living/dining
- 11 Bedroom 2



- Turret bedroom
- View from street
- Western deck
- View from beach
- Level three floor plan
- Level two floor plan
- Level one floor plan



8



9



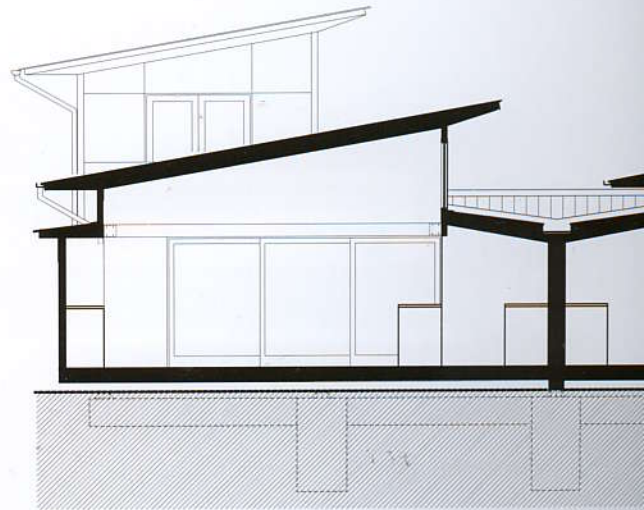
10



12

- 8 Roof, ocean and sky
- 9 Semi-outdoor bathroom
- 10 Living/dining room
- 11 View from top of the dune
- 12 Open walkways
- 13 Cross-section

Photography: Brett Boardman



13

11

